

Regional Transit/Multimodal

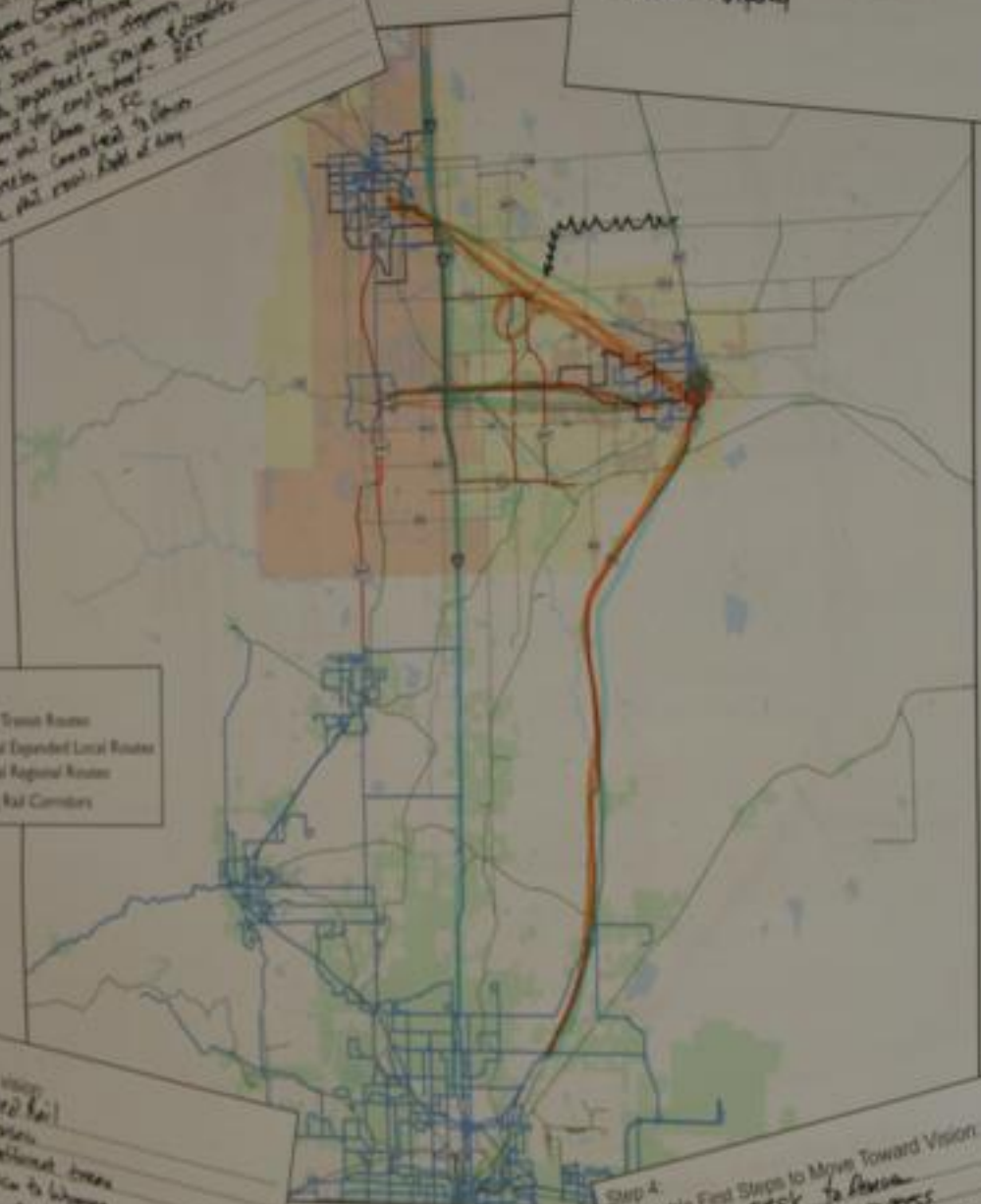
Step 1:
Key messages about regional transit/multimodal planning
Support bus lanes, Greenway, Lanes P.E.C. + Denver
- "Big" of the P.E.C. - "Workshop" - h. m. s. core - area
Regional bus system should support
accessibility important. Service & disability
hours must be enough to EC
Common and then to EC
Get Greenway connected to Green
Denver that runs right at day

Step 2:
Short-term Priorities - What transit/multimodal
connections do we need to provide first:
1. Greeley to Denver, Denver, then Loveland
2. Connect to local medical centers
3. 80 Avenue

Please highlight these 3 in orange on the map
Increased frequency

Legend

- Existing Transit Routes
- Potential Expanded Local Routes
- Potential Regional Routes
- Existing Rail Corridors



Greeley Transit
8th Ave.

- Increased
education on
transit options

Greeley to Denver
G to Denver, LA

Increased frequency

Step 2:
Future transit vision
1. High Speed Rail
2. Mass Transit
3. Smart alternative transit
New Mexico to Wyoming
Front Range Express "Super Sub" by 1/10/11

Step 4:
Affordable First Steps to Move Toward Vision
1. Northern FREE bus express
2. Greeley to EC bus express
3. Rt. 6 onto 2nd Ave - Denver Mass to
Aurora RR Right of Way TriPark

Ideas for Local Connections:
Rt. on 8th Ave
to Denver
EC
Loveland

Step 5: Pros and Cons of Future Transit Options (if time remains)

Regional Bus	BRT	Commuter Rail
+ flexible	+ low cost	- Restricted movement
+ reduce congestion	+ Mass. T. - EC	+ longer distance
+ cost	+ Accessible	+ more people moved
- subject to traffic delays	+ sexy	+ reduce congestion
- comfort		- initial local help
		- cost
		+ comfort
		+ sexy

Accessibility to disabled along a corridor

Step 1:
Key messages about regional transit/multimodal planning:

1. High density
2. High quality
3. High speed

Step 2:
Short-term Priorities - What transit/multimodal connections do we need to provide first:

1. RT
2. BRT on I-405 & I-10
3. LAPE CIRCLE

Please highlight these 3 in orange on the map

Legend

- Existing Transit Routes
- Potential Expanded Local Routes
- Potential Regional Routes
- Existing Rail Corridors



Step 3:
Future transit vision:

1. High density, high quality, high speed
2. High density, high quality, high speed
3. High density, high quality, high speed

Step 4:
Affordable First Steps to Move Toward Vision:

1. High density, high quality, high speed
 2. High density, high quality, high speed
 3. High density, high quality, high speed
- Please highlight these 3 in blue on the map

Ideas for Local Connections:

- 1. High density, high quality, high speed
- 2. High density, high quality, high speed

Step 5: Pros and Cons of Future Transit Options (if time remains)

Regional Bus	BRT (Dedicated Lane)	Commuter Rail
<ul style="list-style-type: none"> 1. High density, high quality, high speed 2. High density, high quality, high speed 3. High density, high quality, high speed 	<ul style="list-style-type: none"> 1. High density, high quality, high speed 2. High density, high quality, high speed 3. High density, high quality, high speed 	<ul style="list-style-type: none"> 1. High density, high quality, high speed 2. High density, high quality, high speed 3. High density, high quality, high speed

Step 1:
 Key messages about regional transit/multimodal planning:
 115 BS Corridor South to Commons City/Rainier
 PARK & RIDE SET CONCEPT
 BS BE A "TRANSFORMATION" CORRIDOR
 - CONCERN ABOUT INTERNAL/LOCAL MOVEMENT ONCE THERE

Step 2:
 Short-term Priorities - What transit/multimodal connections do we need to provide first:
 1. BRT USE BS STATION AT 115th & 125th (only way)
 2. Express bus routes to Denver
 3. _____
 Please highlight these 3 in orange on the map
 → I think some of possible park to ride (not sure for a
 → Greater transition to employment centers (not sure for a
 (local)

Legend

- Existing Transit Routes
- Potential Expanded Local Routes
- Potential Regional Routes
- Existing Rail Corridors



Step 3:
 Future transit vision:
 1. HAVE REAL SYSTEM LESS LAND AND MORE MOVEMENT
 2. REGIONAL DEMAND RESOURCES FOR MOBILITY
 3. SELECT TRANSIT STEPS - SA BRT EARLY!
 4. LINK TO RAIL FOR ON EXISTING INFRASTRUCTURE
 5. ASSESSING FUTURE AND HOW MUCH INVESTMENT

Step 4:
 Affordable First Steps to Move Toward Vision:
 1. TRANSIT GRADE SEP ALONG BS
 2. SUSTAIN EXISTING SYSTEM LOCAL/REGIONAL
 3. NEW INTERCITY ROUTES WITHIN REGION
 After Employment Centers
 Please highlight these in blue on the map

Ideas for Local Connections:

Step 5: Pros and Cons of Future Transit Options (if time remains)

Regional Bus	BRT	Commuter Rail